

# **Instruction manual for charging rechargeable battery pack by Chun-180 charger**



***AA Portable Power Corp***

<http://www.batteryspace.com>

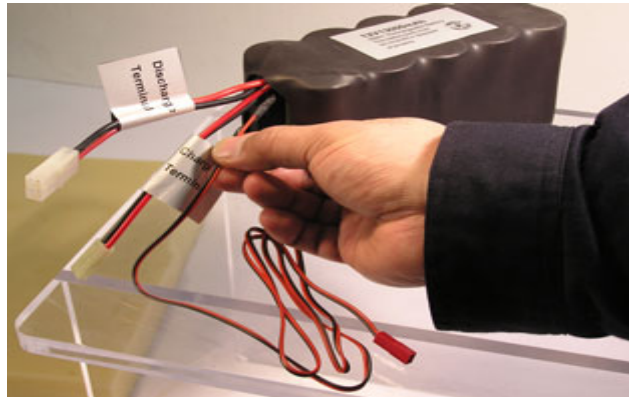
2700 Rydin Road, unit C. Richmond, CA, 94804, USA.

Tel: 510-525-2328

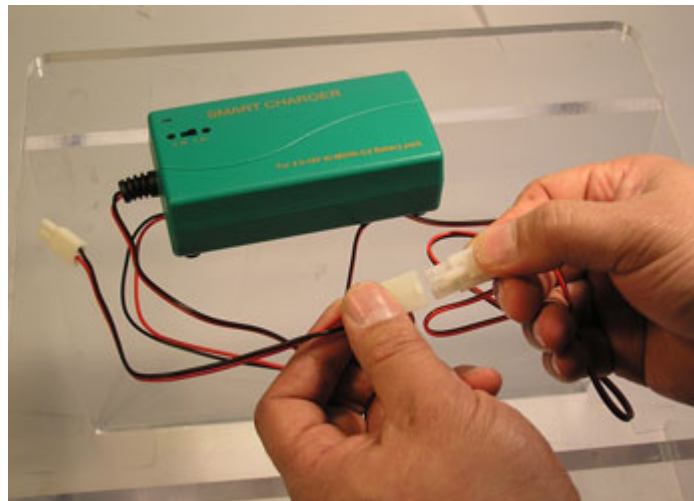
Fax:510-439-2808

## Instruction manual for charging rechargeable battery pack by Chun-180 charger

1. Attach temperature sensor to surface of battery pack firmly



2. Connect the Chun-180 charger (Multi current universal smart charger for 9.6v-18v Nimh/Nicd battery pack) with the connector adaptor provided. (Standard Tamiya Male end of the connector adaptor connect to Standard Tamiya Female plug of the charger)



3. Connect standard mini female end of the connector adaptor to Charging Terminal of the pack (Standard mini male tamiya connector). Then connect the temperature sensor together.

