
PWM-MCC850 DC MOTOR SPEED CONTROL 50A

ADJUSTABLE FREQUENCY

TECHNICAL SPECIFICATIONS

- Power supply: 8-30VDC.
- Load voltage: 8-30VDC./50A. max.
- Frequency can be fixed at 100Hz and adjustable from 400Hz – 3kHz
- Motor speed (PWM) can be adjusted from 0% - 100%
- With LED power indication
- PCB dimensions: 3.42 x 4.92 inches.

CONNECTING AND TUNING

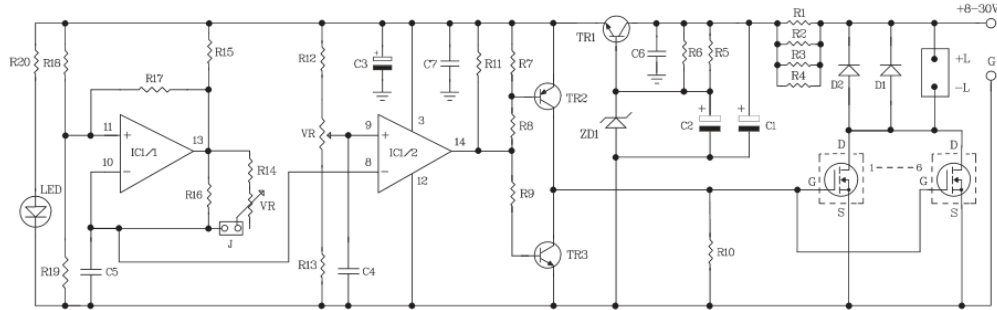
- Point + BATT is to be connected to the positive pole of power supply 8-30VDC
- Point + L is to be connected to the positive pole of DC motor
- Point – L is to be connected to the negative pole of DC motor
- Point – BATT is to be connected to the positive pole of power supply
- VR PWM is used for adjusting the speed of DC motor (PWM) 0-100%
- J1 is used for selecting the frequency. If J1 is jumping, the circuit can adjust the frequency from 400Hz to 3kHz, but if J1 isn't jumping, the frequency will be fixed at 100Hz.

NOTE

- Use electric wire no.12 AWG to connect between circuit and load
- When the frequency is too high, mosfet will easily headted (we recommend to use frequency at 100Hz). If the frequency is adjusted to higher than 500Hz, a mini fan should be installed at the heatsink.



CIRCUIT DIAGRAM



not jump



NOT JUMPING = Fix the frequency at 100Hz.

SELECT FREQUENCY

jump



JUMPING = Adjust the frequency from 400Hz to 3kHz.

INSTALLATION OF THE DC MOTOR SPEED CONTROL 50 AMP ADJUSTABLE FREQUENCY CIRCUIT

