

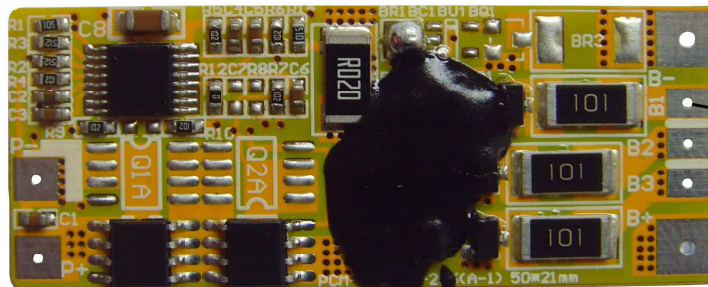
# Protection Circuit Module Specifications For 9.6V LiFePO4 Battery Packs

## PCM-LF3S4A

No.	Test item		Criterion
1	Voltage	Charging voltage	DC: 10.65V CC/CV (3.55V/cell)
		Balance voltage for single cell	3.60V±0.025V
2	Current	Balance current for single cell	36±3mA
		Current consumption for single cell	≤50 μA
		Maximal continuous discharging current	4A
3	Over charge Protection (single cell)	Over charge detection voltage	3.900 ± 0.025 V
		Over charge detection delay time	0.3S—2S
		Over charge release voltage	3.800 ± 0.050 V
4	Over discharge protection (single cell)	Over discharge detection voltage	2.00 ± 0.080 V
		Over discharge detection delay time (C2=0.22U)	100-400ms
		Over discharge release voltage	2.50 ± 0.100 V
5	Over current protection	Over current detection voltage	0.15 ± 0.025 V
		Over current detection current	7.5±1A
		Detection delay time (C2=0.22U)	10ms—40ms
		Release condition	Cut load
6	Short protection	Detection condition	Exterior short circuit
		Detection delay time	200-500us
		Release condition	Cut load
7	Resistance	Protection circuitry	≤50mΩ
8	Temperature	Operating Temperature Range	-40~+85℃
		Storage Temperature Range	-40~+125℃

L50\*W21\*T3mm

P+,P- = Charge+/-,Discharge+/-



B1=NC

