

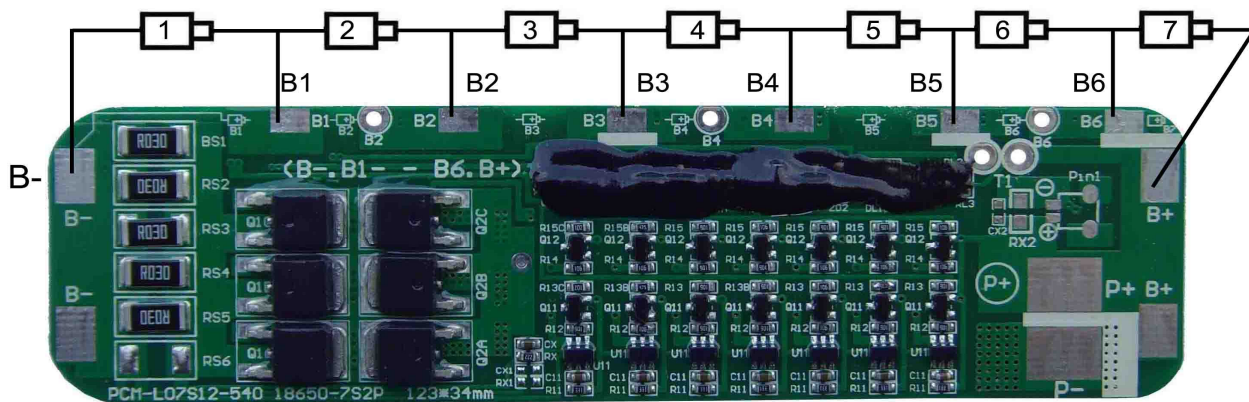
Protection Circuit Module Specifications For 22.4V LiFePO4 Battery Packs

Model: PCB-LiS7A12 18650-7S2P

No.	Test item	Criterion	
1	Voltage	Charging voltage	DC: 25.2V CC/CV (3.6V/1cell)
		Balance voltage for single cell	
2	Current	Balance current for single cell	
		Current consumption for single cell	≤20 μA
		Maximal continuous charging current	12A
		Maximal continuous discharging current	12A
3	Over charge Protection (single cell)	Over charge detection voltage	3.90±0.025V
		Over charge detection delay time	0.5S—2S
		Over charge release voltage	3.80±0.05V
4	Over discharge protection (single cell)	Over discharge detection voltage	2.0±0.05V
		Over discharge detection delay time	100—250ms
		Over discharge release voltage	2.3±0.1V
5	Over current protection	Over current detection voltage	0.1v
		Over current detection current (R025/5)	20±5A
		Detection delay time	5ms—20ms
		Release condition	Cut load
6	Short protection	Detection condition	Exterior short circuit
		Detection delay time	200-500us
		Release condition	Cut load
7	Resistance	Protection circuitry (B- TO P-)	≤60m Ω
8	Temperature	Operating Temperature Range	-40~+85℃
		Storage Temperature Range	-40~+125℃

L123*W34*T4mm

18650-7S2P



P+ = Charge+/Discharge+ P- = Charge-/Discharge-