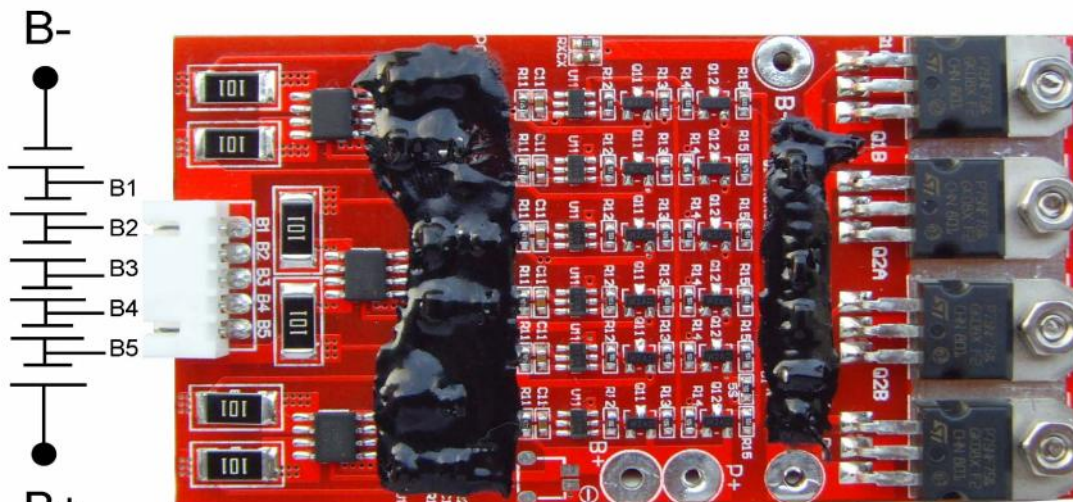


Protection Circuit Module Specifications For 19.2V LiFePO4 Battery Packs

Model: PCM-LFP10AS6

No.	Test item		Criterion (Ta = 25°C)
1	Voltage	Charging voltage	DC: 21.6V CC/CV (3.6V/Cell)
		Balance voltage for single cell	3.60±0.03V
2	Current	Balance current for single cell	58±5mA
		Current consumption for single cell	≤20μA
		Maximal continuous charging current	10A
		Maximal continuous discharging current	10A
3	Over charge Protection	Over charge detection voltage	3.90±0.025V
		Over charge detection delay time	0.5S—2S
		Over charge release voltage	3.80±0.05V
4	Over discharge protection	Over discharge detection voltage	2.0±0.05V
		Over discharge detection delay time	100—250mS
		Over discharge release voltage	2.3±0.1V
5	Over current protection	Over current detection voltage	0.6±0.1V
		Over current detection current	50±10A
		Detection delay time	5ms—20ms
		Release condition	Cut load
6	Short protection	Detection condition	Exterior short circuit
		Detection delay time	100-500us
		Release condition	Cut load
7	Resistance	Protection circuitry B- to Discharge-	≤40mΩ
8	Temperature	Operating Temperature Range	-40~+85°C
		Storage Temperature Range	-40~+125°C

L85*W47*T9mm



P+,P- = Charge+/-,Discharge+/-