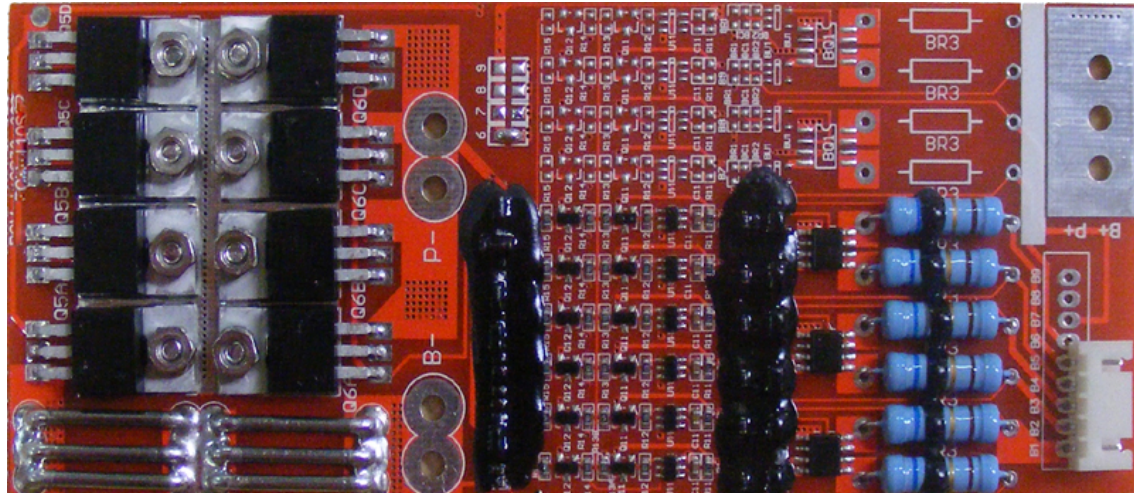


**Protection Circuit Module Specifications For 22.2V Li-ion/Li-Po Battery Pack**

| <b>Model: PCM-LI22.2V20A, Product ID#4365</b> |   |              |
|---|---|--------------|
| No.   | Test item   | Criterion    |
| 1   | Overcharge protection voltage for single cell     | 4.325±0.025V |
| 2   | Over discharge protection voltage for single cell | 2.5±0.05V    |
| 3   | Balance voltage for single cell                   | 4.20±0.025V  |
| 4   | Over current detection protection                 | 100±15A      |
| 5   | Maximal continuous discharging current            | 20A          |
| 6   | Maximal Current consumption for single cell       | 20μA         |
| 7   | Protection circuitry resistance                   | ≤30mΩ        |
| 8   | Dimension LxWxT (mm)                              | 145x59x9     |
| 9   | Weight (grams)                                    | 62           |

**P+ / P- = Charge + / -, Discharge + / -      B+ = P +**



**B1   B2   B3   B4   B5**

